

**CSTB Antibody (Center)**  
**Affinity Purified Rabbit Polyclonal Antibody (Pab)**  
**Catalog # AP14355c****Specification**

---

**CSTB Antibody (Center) - Product Information**

Application	WB,E
Primary Accession	<a href="#">P04080</a>
Other Accession	<a href="#">P35478</a> , <a href="#">P25417</a> , <a href="#">NP_000091.1</a> , <a href="#">Q10994</a>
Reactivity	Human
Predicted	Bovine, Sheep
Host	Rabbit
Clonality	Polyclonal
Isotype	Rabbit IgG
Calculated MW	11140
Antigen Region	10-39

**CSTB Antibody (Center) - Additional Information****Gene ID** 1476**Other Names**

Cystatin-B, CPI-B, Liver thiol proteinase inhibitor, Stefin-B, CSTB, CST6, STFB

**Target/Specificity**

This CSTB antibody is generated from rabbits immunized with a KLH conjugated synthetic peptide between 10-39 amino acids from the Central region of human CSTB.

**Dilution**

WB~~1:1000

E~~Use at an assay dependent concentration.

**Format**

Purified polyclonal antibody supplied in PBS with 0.09% (W/V) sodium azide. This antibody is purified through a protein A column, followed by peptide affinity purification.

**Storage**

Maintain refrigerated at 2-8°C for up to 2 weeks. For long term storage store at -20°C in small aliquots to prevent freeze-thaw cycles.

**Precautions**

CSTB Antibody (Center) is for research use only and not for use in diagnostic or therapeutic procedures.

**CSTB Antibody (Center) - Protein Information****Name** CSTB

**Synonyms** CST6, STFB

**Function** This is an intracellular thiol proteinase inhibitor. Tightly binding reversible inhibitor of cathepsins L, H and B.

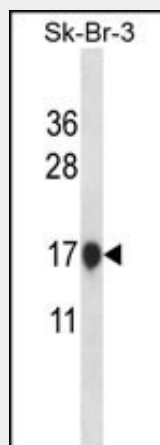
**Cellular Location**

Cytoplasm. Nucleus

**CSTB Antibody (Center) - Protocols**

Provided below are standard protocols that you may find useful for product applications.

- [Western Blot](#)
- [Blocking Peptides](#)
- [Dot Blot](#)
- [Immunohistochemistry](#)
- [Immunofluorescence](#)
- [Immunoprecipitation](#)
- [Flow Cytometry](#)
- [Cell Culture](#)

**CSTB Antibody (Center) - Images**

CSTB Antibody (Center) (Cat. #AP14355c) western blot analysis in SK-BR-3 cell line lysates (35ug/lane). This demonstrates the CSTB antibody detected the CSTB protein (arrow).

**CSTB Antibody (Center) - Background**

The cystatin superfamily encompasses proteins that contain multiple cystatin-like sequences. Some of the members are active cysteine protease inhibitors, while others have lost or perhaps never acquired this inhibitory activity. There are three inhibitory families in the superfamily, including the type 1 cystatins (stefins), type 2 cystatins and kininogens. This gene encodes a stefin that functions as an intracellular thiol protease inhibitor. The protein is able to form a dimer stabilized by noncovalent forces, inhibiting papain and cathepsins L, H and B. The protein is thought to play a role in protecting against the proteases leaking from lysosomes. Evidence indicates that mutations in this gene are responsible for the primary defects in patients with progressive

myoclonic epilepsy (EPM1).

#### **CSTB Antibody (Center) - References**

Bailey, S.D., et al. Diabetes Care 33(10):2250-2253(2010)  
Ceru, S., et al. J. Biol. Chem. 285(13):10078-10086(2010)  
Skerget, K., et al. J. Biol. Chem. 285(5):3201-3210(2010)  
Ceru, S., et al. Biol. Cell 102(6):319-334(2010)  
Talmud, P.J., et al. Am. J. Hum. Genet. 85(5):628-642(2009)